

# Property market



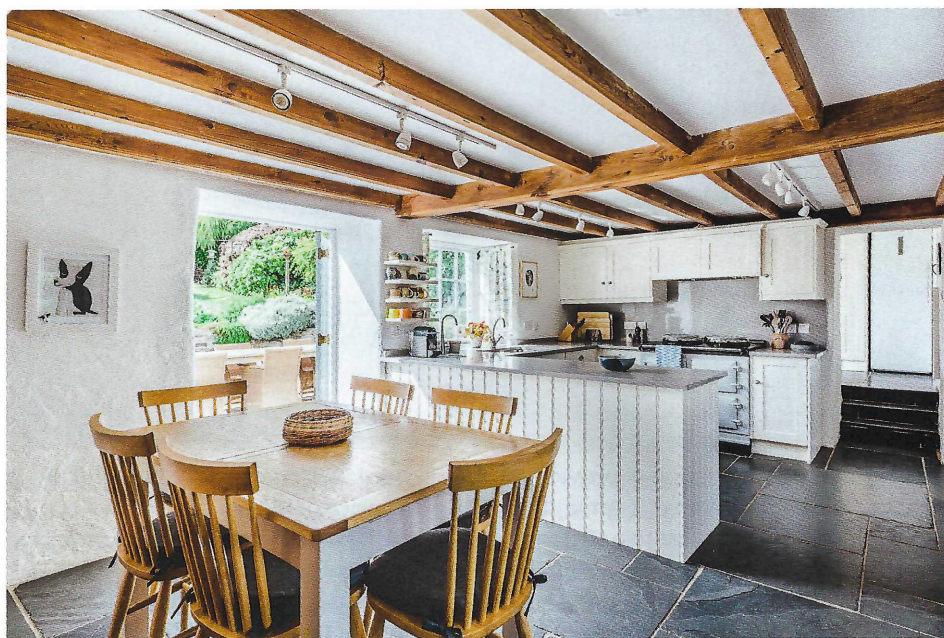
**Above:** Lawithick stands above the harbour at Mylor Creek, Cornwall. £1.85m. **Right:** The kitchen opens onto the terrace and gardens

structure and thoughtful planting and landscaping are laid out with artistic aplomb.

Selling agent Robert Pritchard comments: 'Although the Abbey has been a hotel and more recently used for holiday lets, the building is generally domestic in its purpose. Having the property split into three elements provides scope for multiple alternative uses, such as a private dwelling with an income, an art gallery, a company headquarters or a high-end guest house'.

Still in Cornwall, Falmouth-based Jonathan Cunliffe (01326 617447) quotes a guide price of £1.85m for the enchanting Lawithick at Mylor Churchtown, near Falmouth, which sits in a prominent position overlooking the historic church and harbour at the mouth of Mylor Creek, 1½ miles by water from Falmouth Harbour.

There has been a house at Lawithick since 1227, when it may have housed the builders of the exquisite St Mylor parish church. It then became a farm and, in the 1830s, was an inn called the Clinton Arms, which was closed down by a 19th-century vicar who thought too many of his flock were worshipping Bacchus, rather than God. In 1931, Mr and



Mrs Curnow moved into the house, farming six fields beyond the church and, during the Depression, opening a tea room in the garden. More recently, Lawithick was owned by Vice-Admiral Sir James Jungius, who was Supreme Allied Commander Atlantic at NATO from 1975–77.

It has been beautifully renovated by the current owners, who bought it in 2006; the charming main house with its chalky-white

façade offers three reception rooms, three bedrooms, three bathrooms and a family kitchen and sits prettily in the centre of its grounds behind a private gated entrance. A converted two-bedroom barn offers versatile additional accommodation with great letting potential. Outside, densely planted borders of camellias, mimosas, rhododendrons and mahonia provide total seclusion from the lane and the neighbouring properties. 🐣