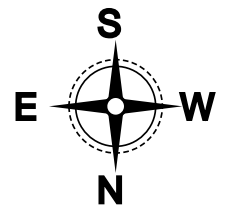
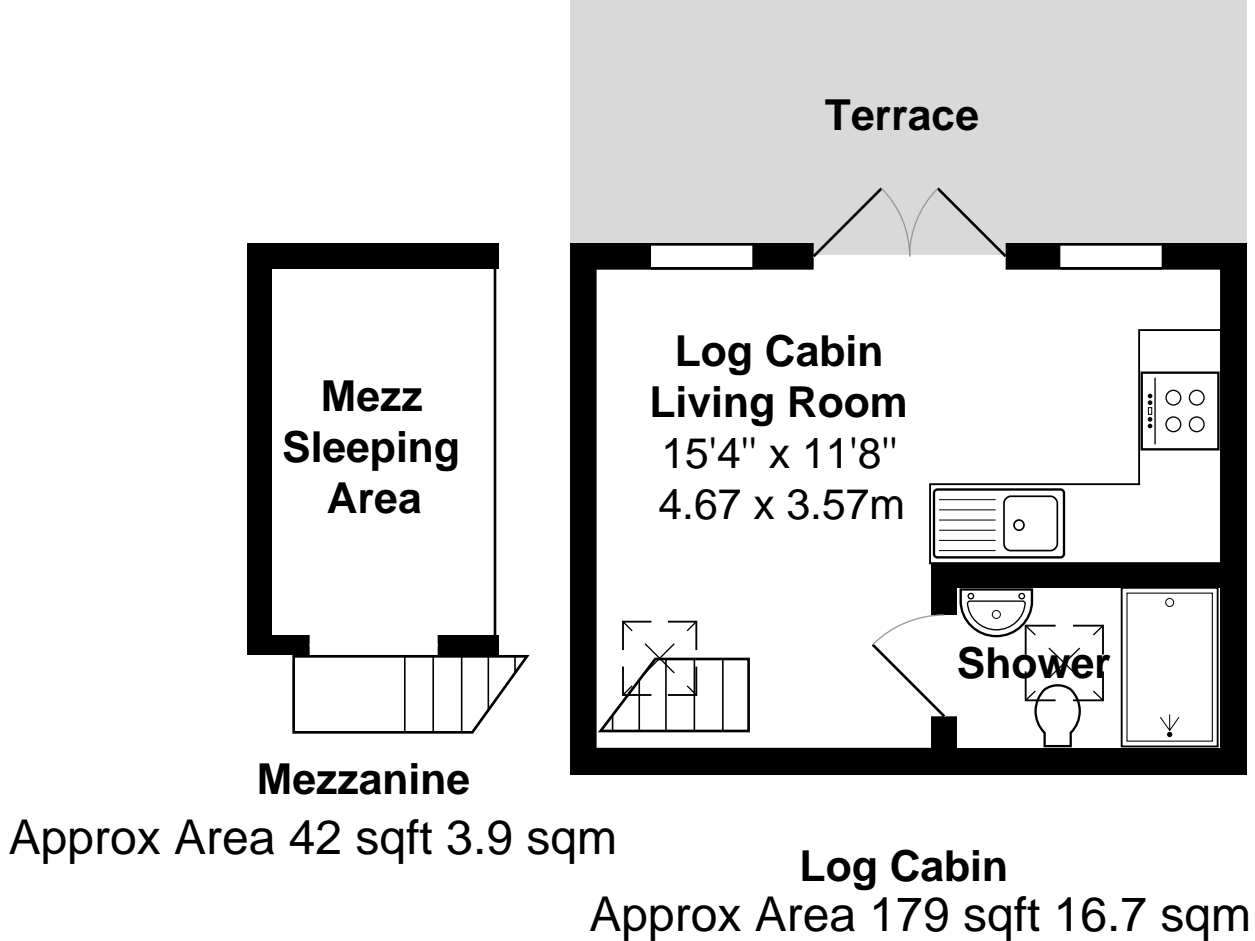
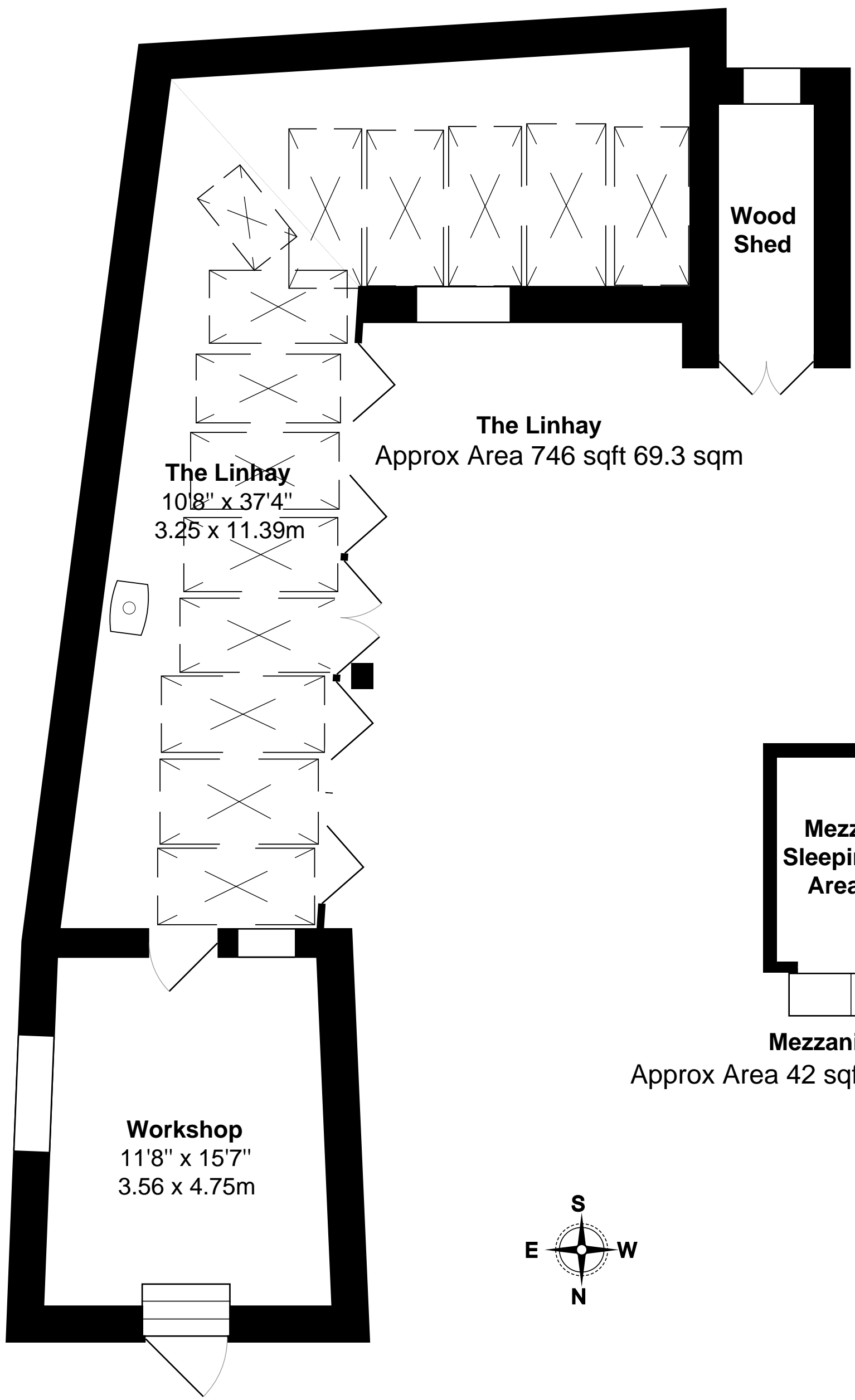
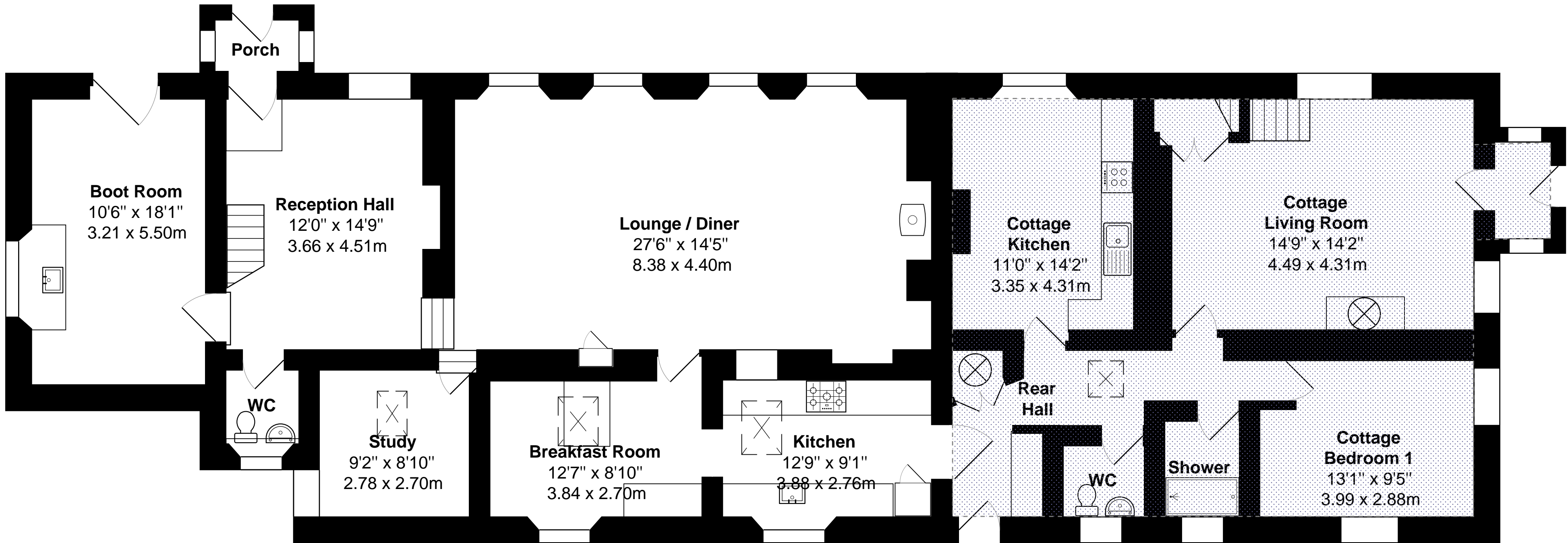


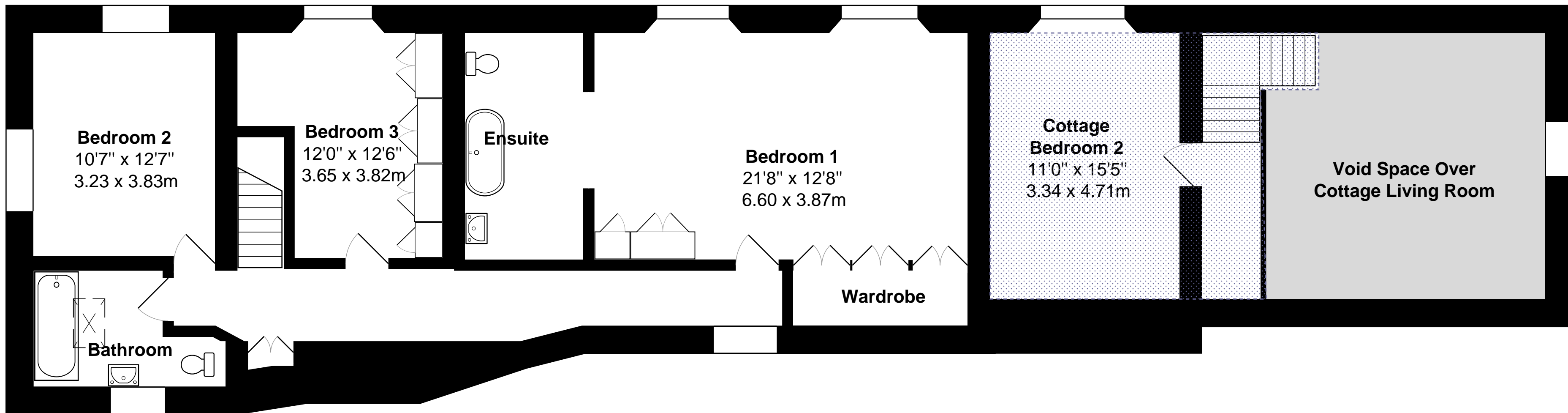
HILLHAY FARM PENVENTINUE LANE FOWEY PL23 1JT
TOTAL APPROX. FLOOR AREA 4134 sqft (384 sqm)
 (excluding log cabin terrace)



Cottage Area
 Ground Floor 784.2 sqft 72.85sqm
 First Floor 250.5 sqft 23.27 sqm



Ground Floor
 Approx Area 1986 sqft 184.5 sqm



First Floor
 Approx Area 1095 sqft 101.8 sqm